

*From Meetings
to Movements*

Social Permaculture Strategies
for Transition

Adam Brock
adambrock.me

How established is
Transition in your community?

1. What's transition?
2. I'm familiar with transition, but there aren't any efforts where I live
3. My community has a fledgling transition network (or equivalent group)
4. We have a robust transition initiative

What is your experience with
Permaculture?

1. I've heard of it
2. I'm pretty familiar – read a book or two, watched some videos
3. I've taken a permaculture design course
4. I practice permaculture professionally

What is your experience with
Pattern Languages?

1. What are pattern languages?
2. I've heard the term, but I'm not really sure what it means
3. I've had some experience with pattern languages
4. I love pattern languages and use them all the time

UNIDOS CON EL

GROWHAUS

DESDE

2009

ELYRIA-SWANSEA, CO





Permaculture is revolutionizing the way
we work and grow together in Denver.

Join our community at the future's edge.



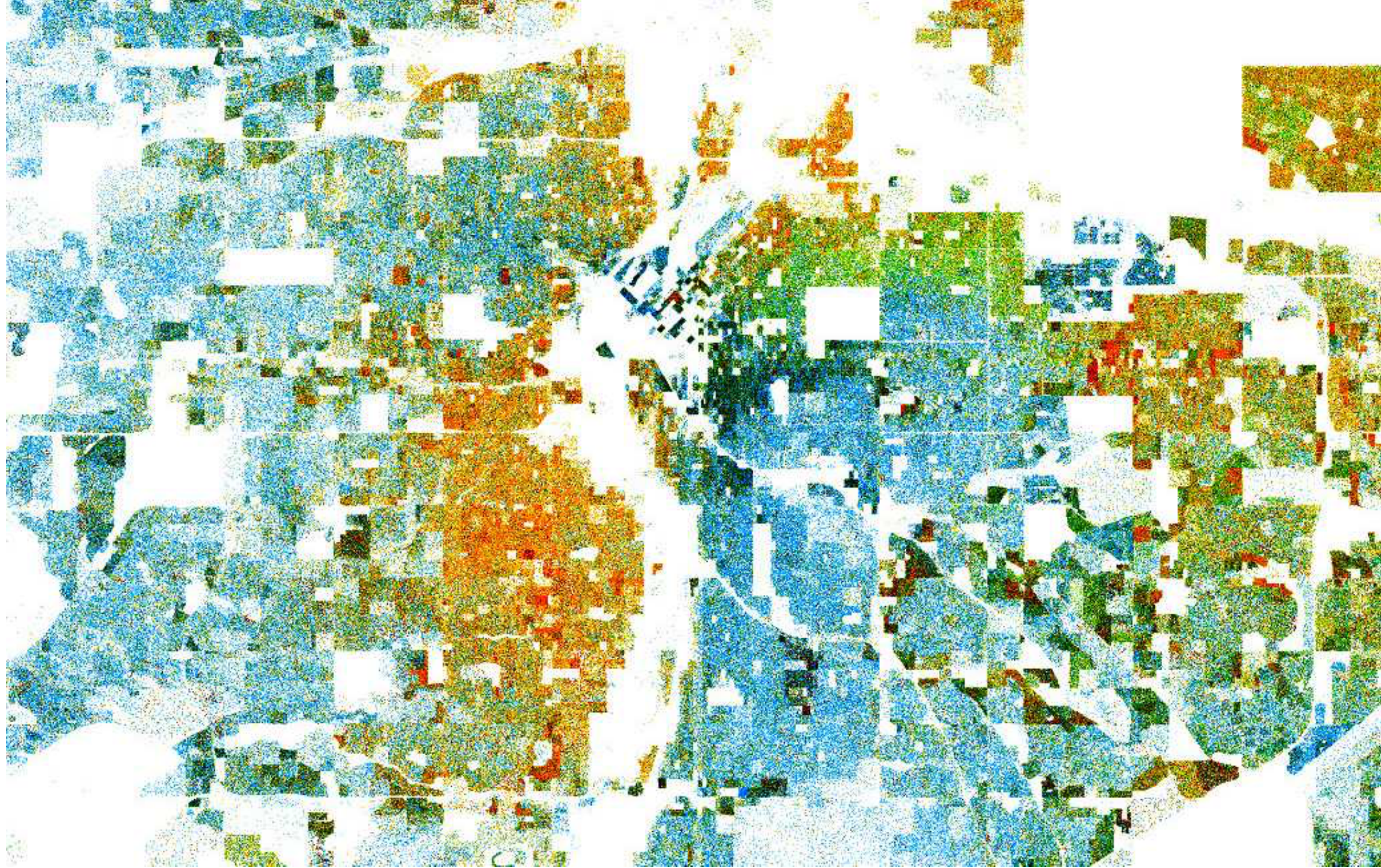
\$60/year or \$6/month
denverpermacultureguild.com/join



CHANGE HERE NOW

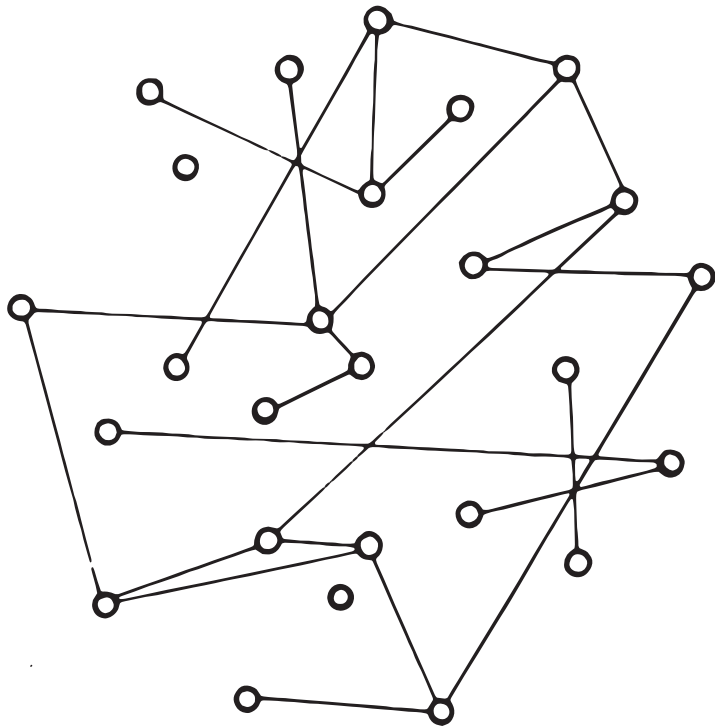
PERMACULTURE SOLUTIONS FOR PERSONAL
AND COMMUNITY TRANSFORMATION

Adam Brock



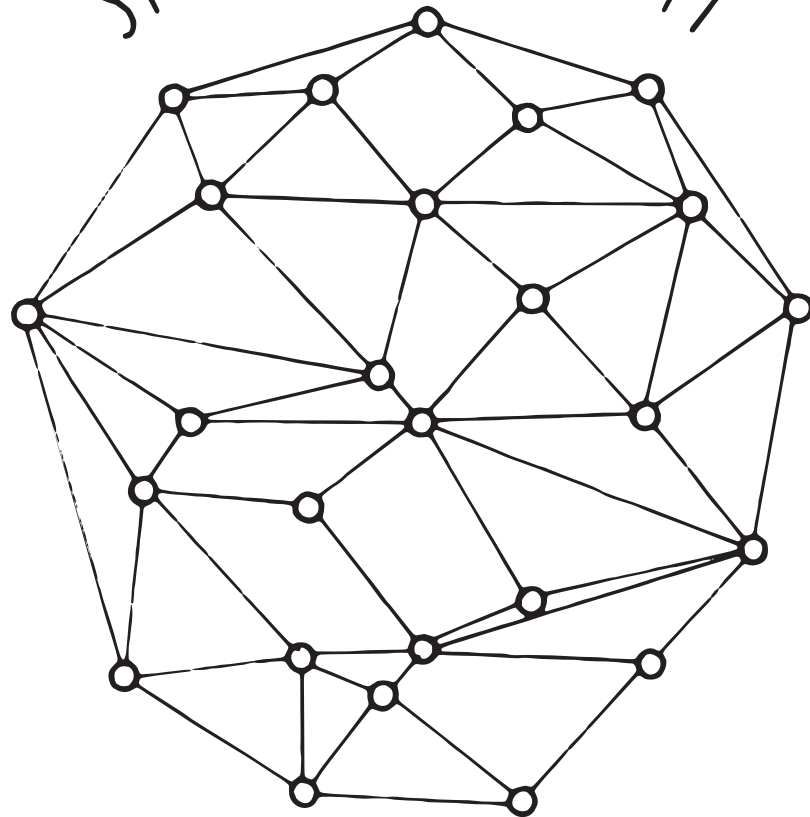
Interdependent Community

WEAK COMMUNITY



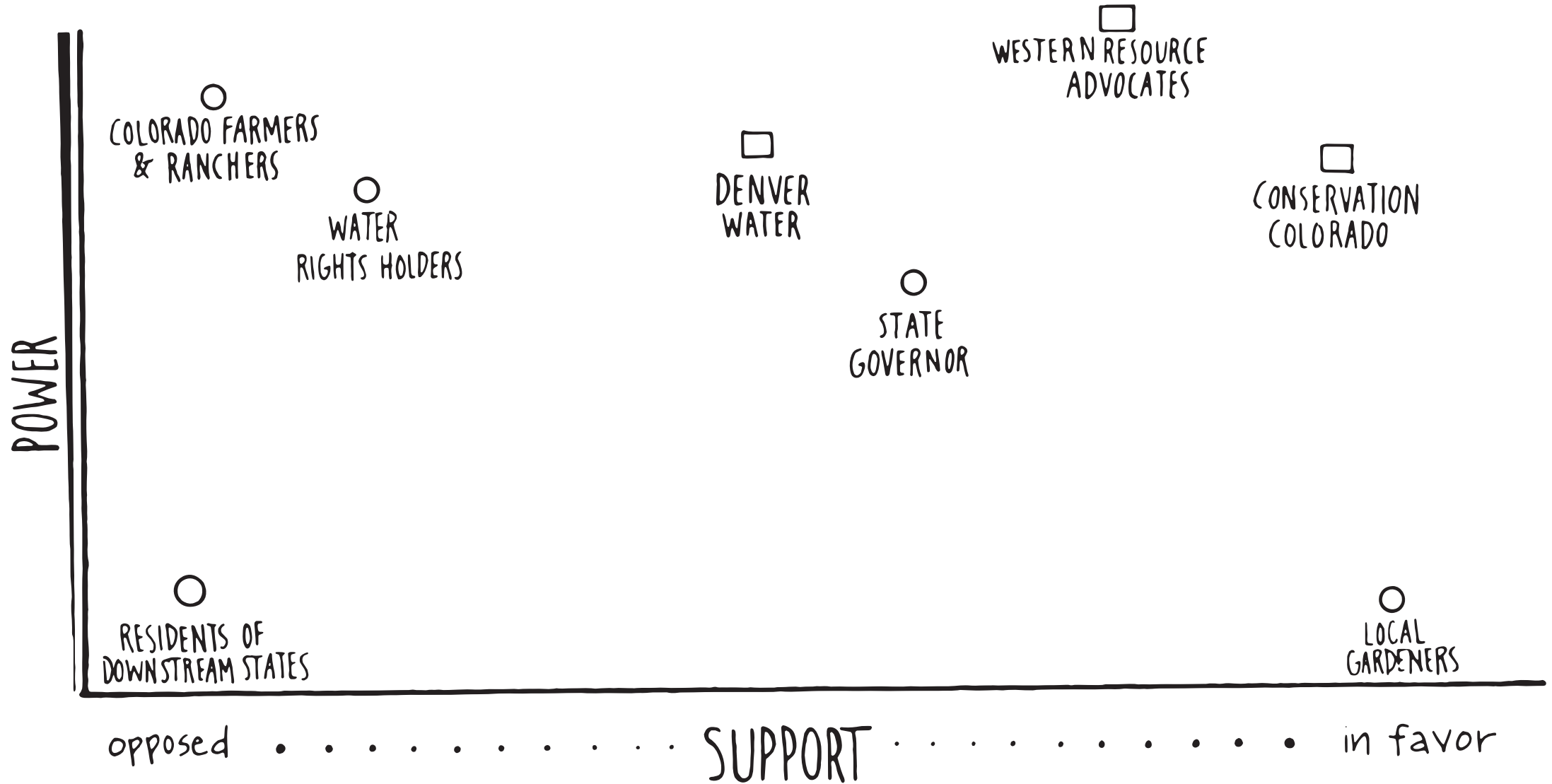
- lacking strong connections

STRONG COMMUNITY

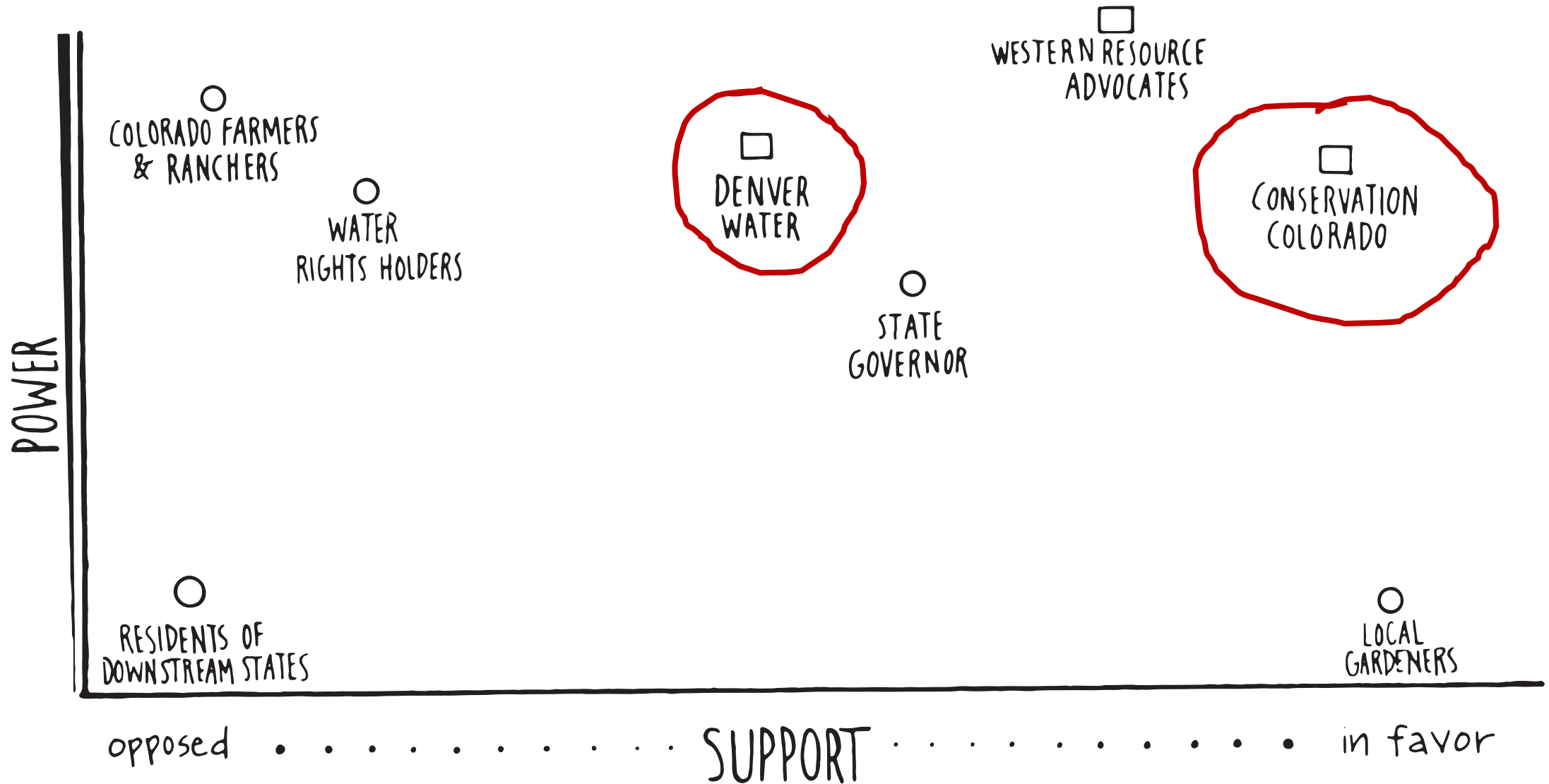


- mutually interdependent
- diverse
- often organized around aid

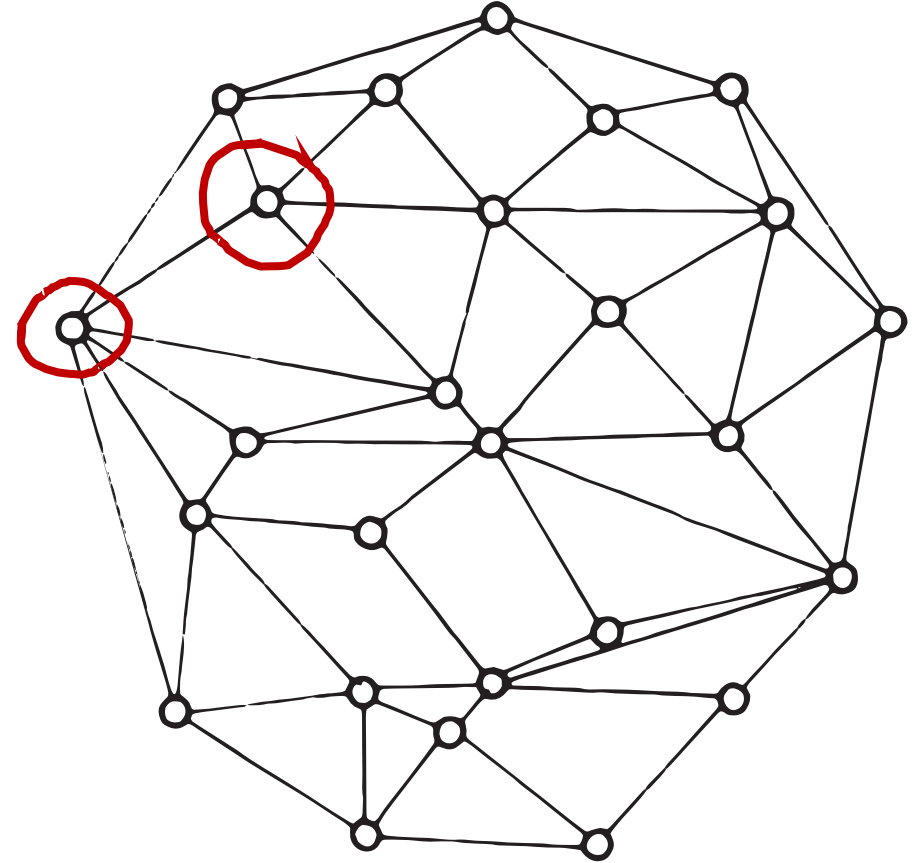
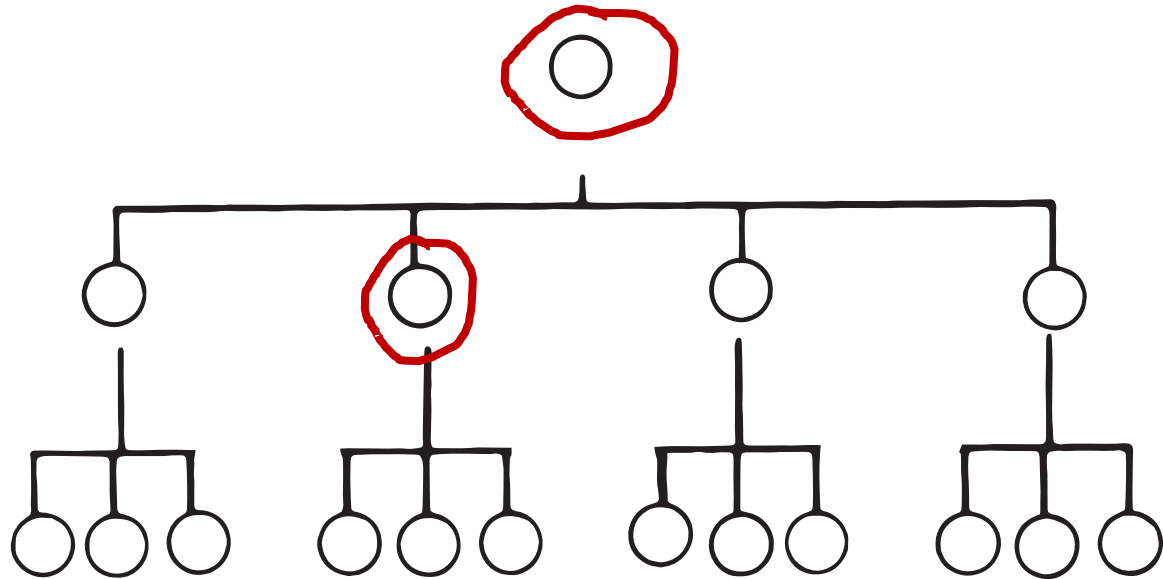
1. Perform a Power Analysis



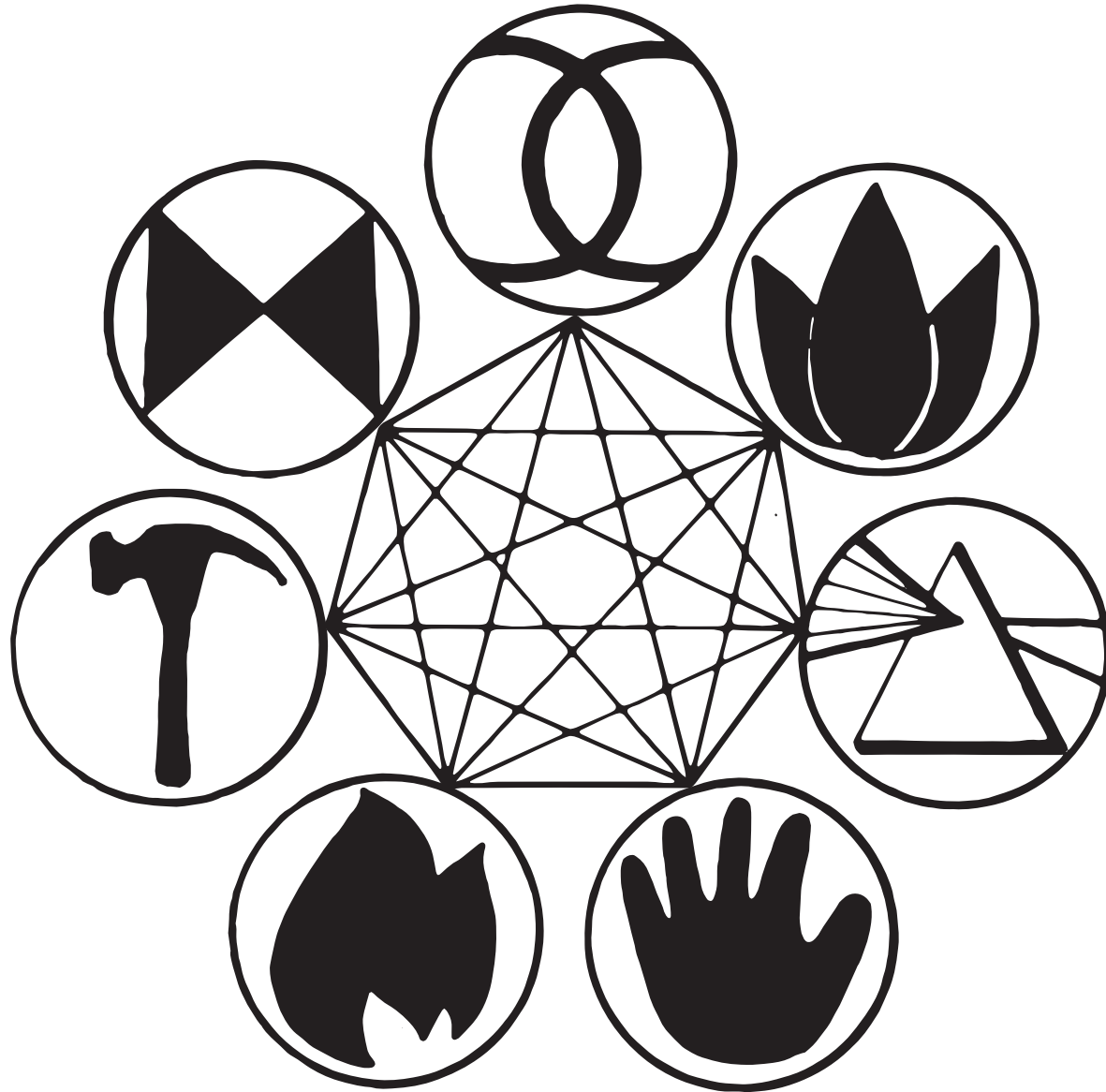
2. Identify Allied Institutions



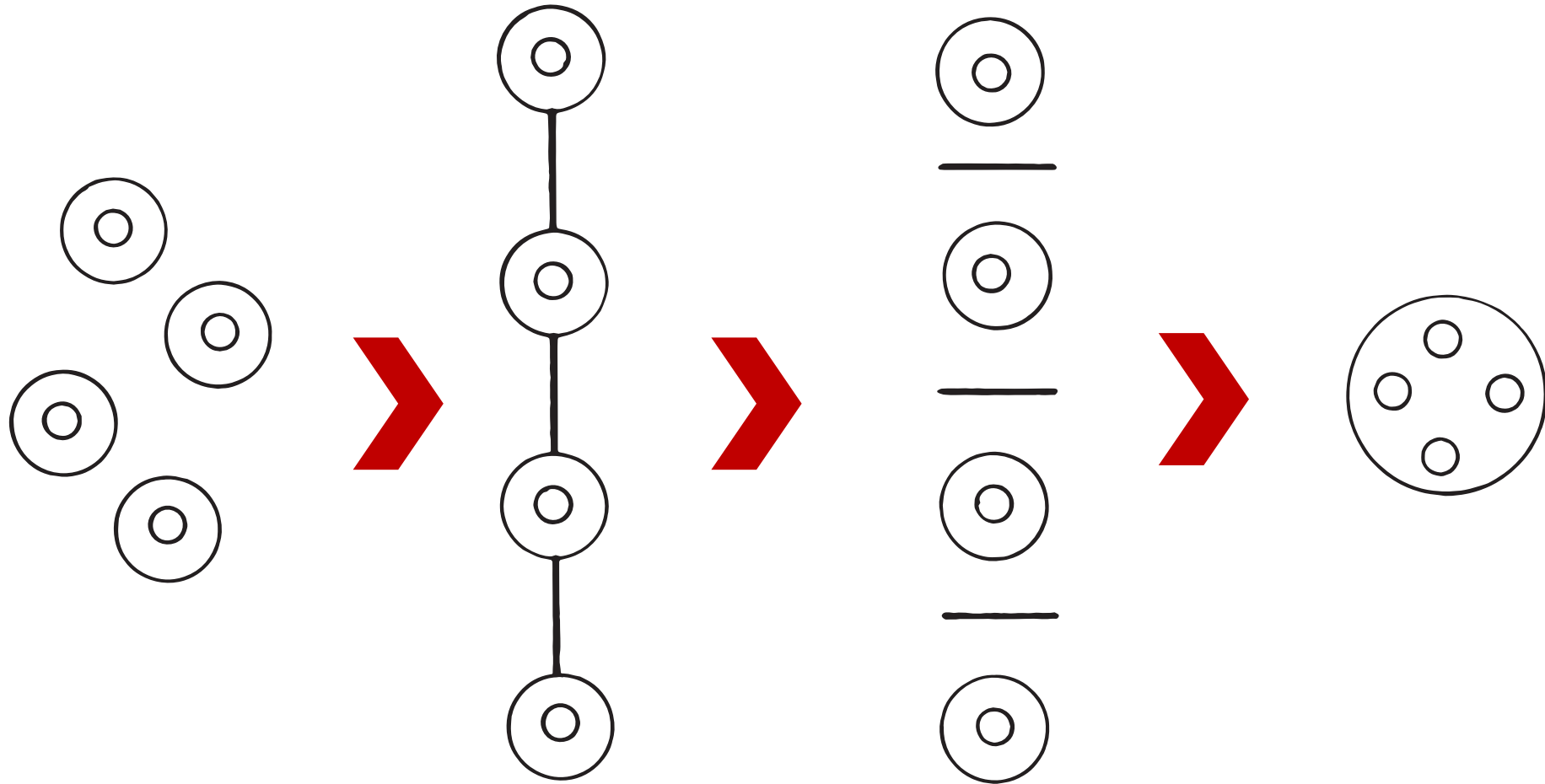
3. Identify Leaders + Translators



4. Observe and Interact



5. Small and Slow Collaboration





CHANGE
HERE NOW

PERMACULTURE SOLUTIONS FOR PERSONAL
AND COMMUNITY TRANSFORMATION

Adam Brock

*Let's Build
Together!*

adambrock.me

wildgreenyonder@gmail.com

303.601.1621